

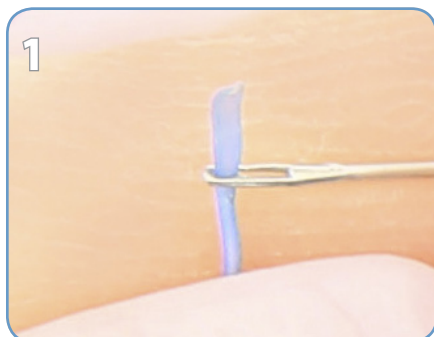
## BEACH UMBRELLA INSPIRED PENDANT

By: Meredith Roddy



### Materials

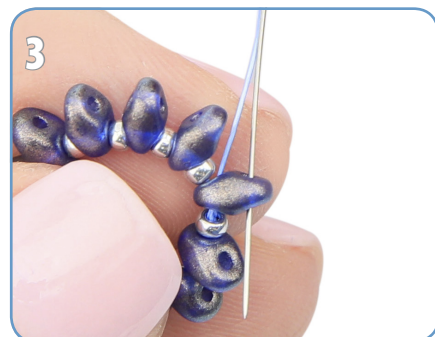
- 161I-008 - WildFire
- JNEEH13/10 - WildFire Needles
- 211F-100 - WildFire Cord Battery Operated Cord Cutter
- 325S-003 - Stainless Steel Wire Guardians
- Flat Nose Pliers
- Superduo Beads
- 3mm Bicone Beads
- Size 11 Seed Beads



1. Cut a 5' piece of WildFire and flatten the end with Flat Nose Pliers. Pinch the WildFire between your thumb and forefinger and "needle the thread" by pushing the eye of the needle over the WildFire.



2. Pick up one size 11 and 1 SuperDuo 11 times. Thread through the first bead again to form a circle, then retrace the bead path to reinforce. Tie the ends in a knot and use the WildFire Cord Cutter to trim and seal the short end.



3. Sew through the next size 11 and Superduo, then step up by threading back through the top of the Superduo.



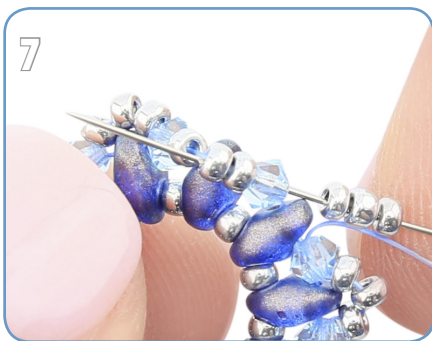
4. Add a 3mm bicone in between each of the Superduos.



5. Step up by sewing through the first bicon added in this round.



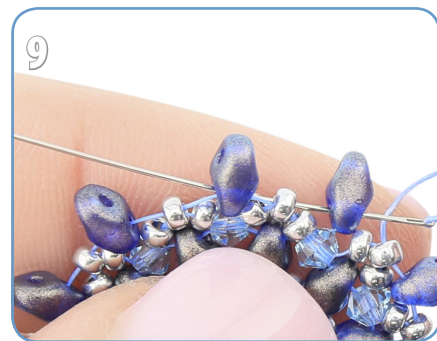
6. Add 3 size 11 seed beads, skip the Superduo and sew through the next 3mm bicone. Repeat to add 3 size 11 seed beads in between each bicone.



7. Add the last 3 size 11 seed beads and step up through the first two size 11 seed beads in the round.



8. Add 1 Superduo in between each of the middle size 11 seed beads in the picot.



9. Step up by threading through the bottom of the first Superduo in the round, then going back through the top of the Superduo you've just beaded through.



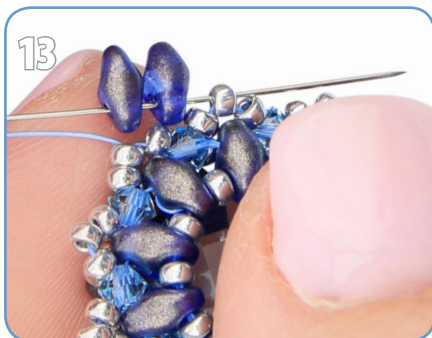
10. Add a size 11 Seed Bead in between each of the Superduos.



11. Pop the stone into the bezel and pull everything tight. Retrace the thread path through each of the 11s and Superduos to reinforce.



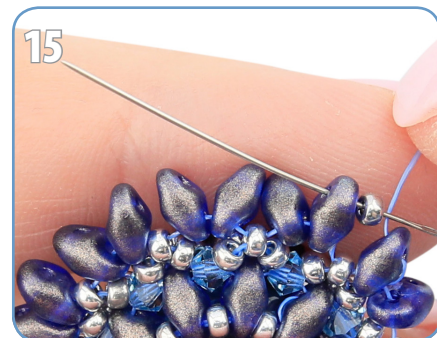
12. Weave through the beadwork so that the thread is coming out of one of the 3mm bicones. Add a 3 bead picot with size 11s between each of the 3mm bicone beads.



13. Step up through the next two size 11s. Add 2 Superduos between the middle size 11 seed bead all the way around.



14. Step up by threading through the next superduo, then threading back through the top of the same Superduo your thread is coming out of.



15. For this round, alternate adding a size 11 seed bead (in between the Superduos above the seed bead picot) ....





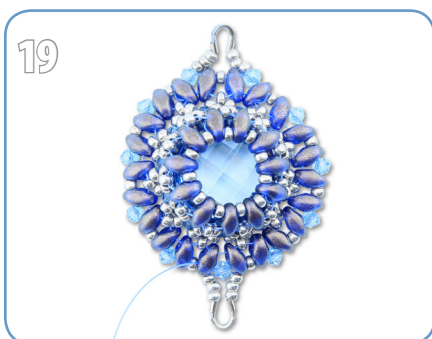
16. ...and a 3mm bicone (in between the Superduos above the 3mm bicone).



17. Sew through this round again to reinforce. Bring the needle out of a bicone bead.



18. Add a Wire Guardian by picking up 3 size 11 seed beads, a Wire Guardian, 3 size 11 seed beads, then sew back through the next bicone. Weave around again to reinforce.



19. Weave through the beadwork and repeat step 18 to add a Wire Guardian on the opposite side. Sew in the tail and tie a few overhand knots to secure.

